

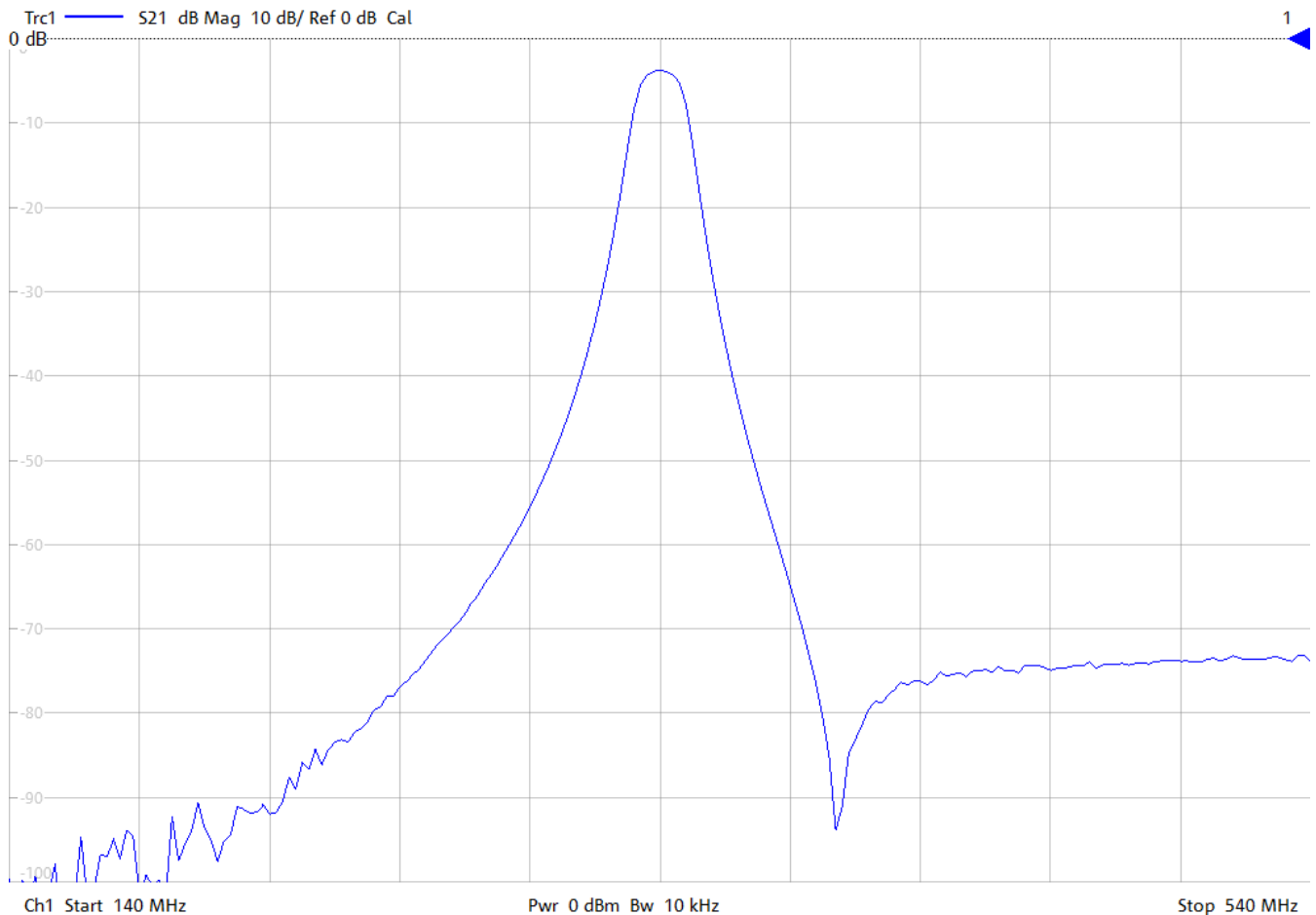
General Description

KR Electronics part number 3390-SMA is a 340 MHz Bandpass Filter. The filter has a typical 3 dB bandwidth of 14.5 MHz. Other frequencies are available. Please consult the factory.

Features

- Bandpass Filter
- 340 MHz Center Frequency
- 3 dB Bandwidth: 14.5 MHz typical
- 50 Ω Source and Load
- SMA Connectors
- Surface Mount also available
- Other frequencies available

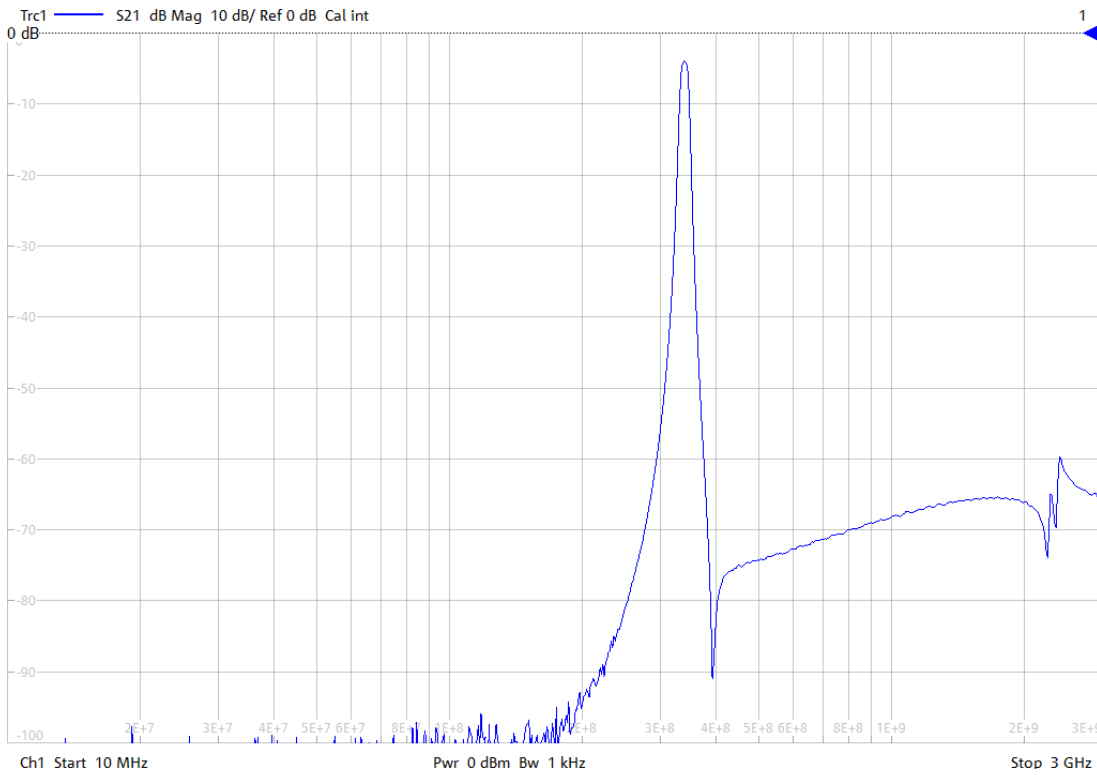
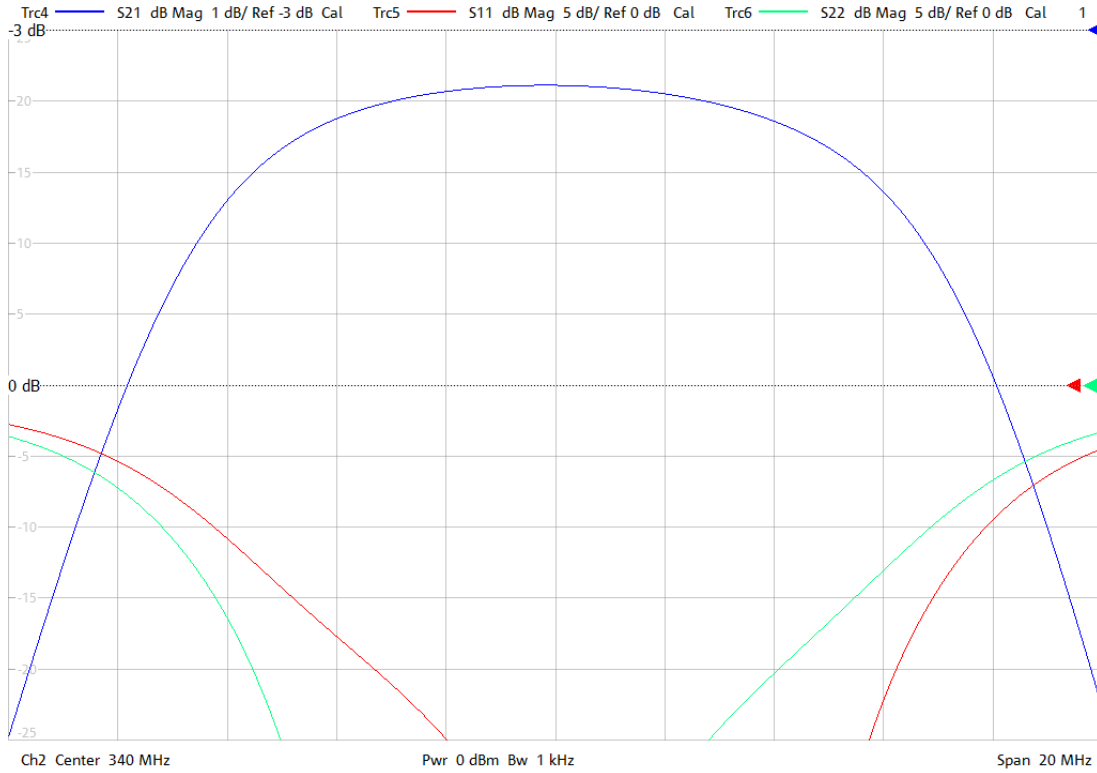
Typical Performance



KR Electronics, Inc.
91 Avenel Street
Avenel, NJ 07001

Web www.krfilters.com
Email sales@krfilters.com
Phone (732) 636-1900
Fax (732) 636-1982

KR Electronics 3390-SMA



KR Electronics, Inc.
 91 Avenel Street
 Avenel, NJ 07001

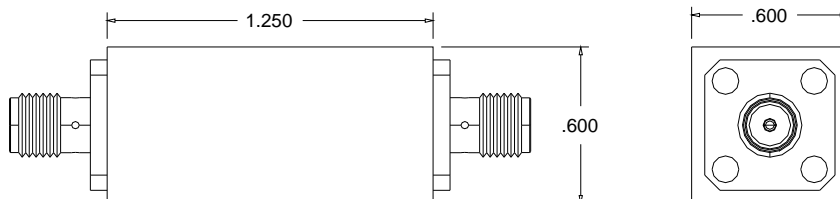
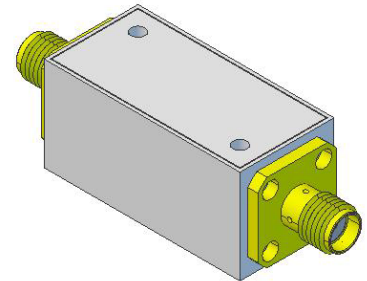
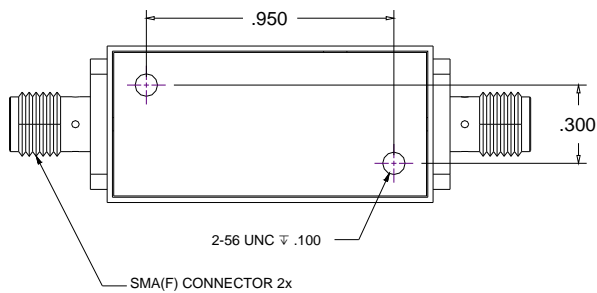
Web www.krfilters.com
 Email sales@krfilters.com
 Phone (732) 636-1900
 Fax (732) 636-1982

KR Electronics 3390-SMA

Specifications

Parameter	Specification	
Filter type	Bandpass	
Frequency Band	340 MHz	
Insertion Loss at 340 MHz	6 dBa max	3.8 dBa typical
1 dBc Bandwidth	10.4 MHz typical	
3 dBc Bandwidth	15 MHz \pm 33%	14.5 MHz \pm 10% typical
20 dBc Bandwidth	29 MHz typical	
40 dBc Bandwidth	52 MHz typical	
60 dBc Bandwidth	92 MHz typical	
Source and Load	50 Ω	

Physical Dimensions



Notes:

1. Dimensions in inches
2. Metal Case
3. SMA(F) Connectors
4. Also available in surface mount package

KR Electronics, Inc.
91 Avenel Street
Avenel, NJ 07001

Web www.krfilters.com
Email sales@krfilters.com
Phone (732) 636-1900
Fax (732) 636-1982