

## General Description

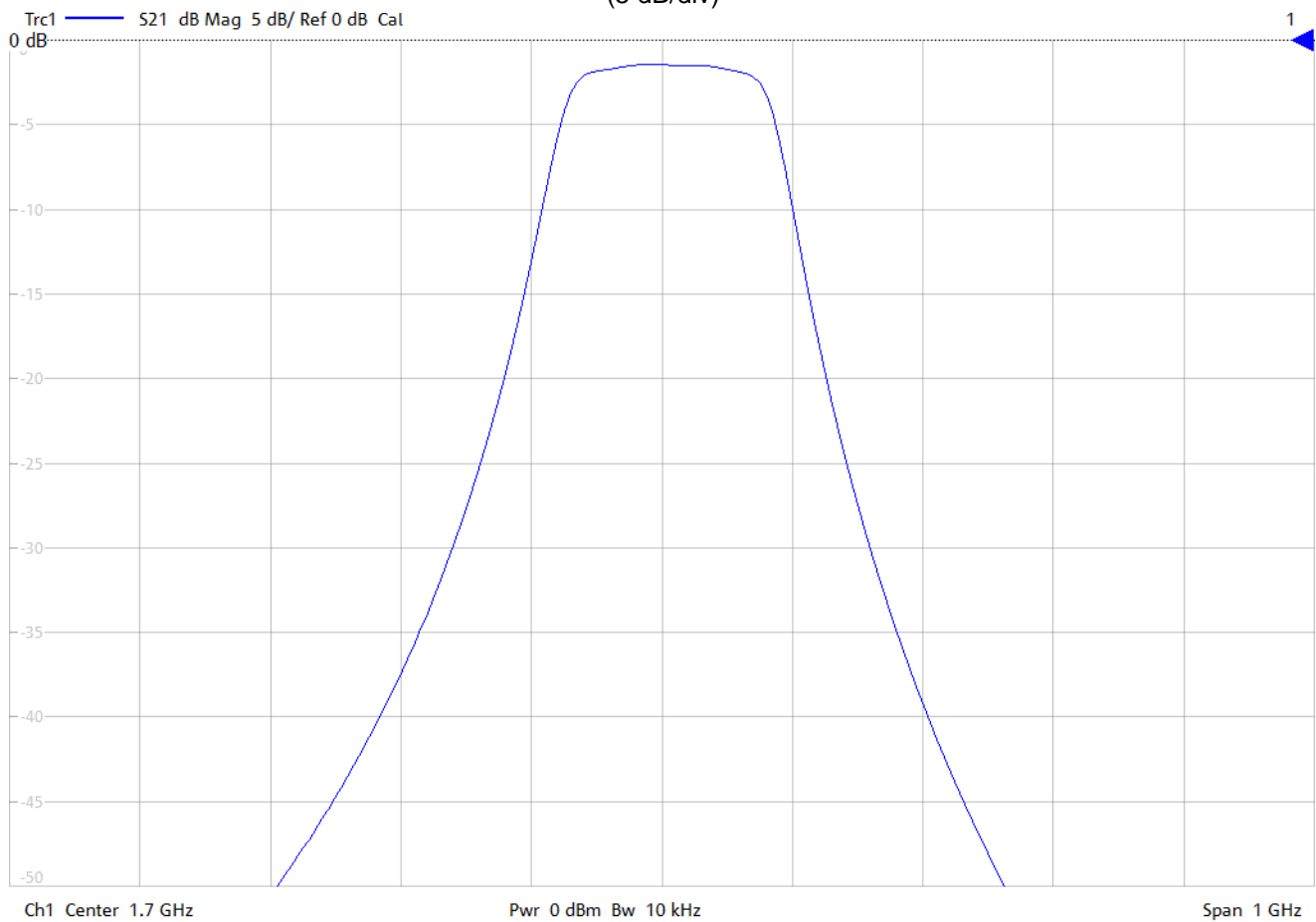
KR Electronics part number 3340-SMA is a 1700 MHz bandpass filter. The filter has a min 1 dB bandwidth of 100 MHz. Other center frequencies are available. Please consult the factory.

### Features

- 1700 MHz Bandpass Filter
- 100 MHz minimum 1 dB Bandwidth
- 50  $\Omega$  Source and Load
- SMA Connectors
- 1.25" x 0.6" x 0.6"

## Typical Performance

### Overall Response (5 dB/div)



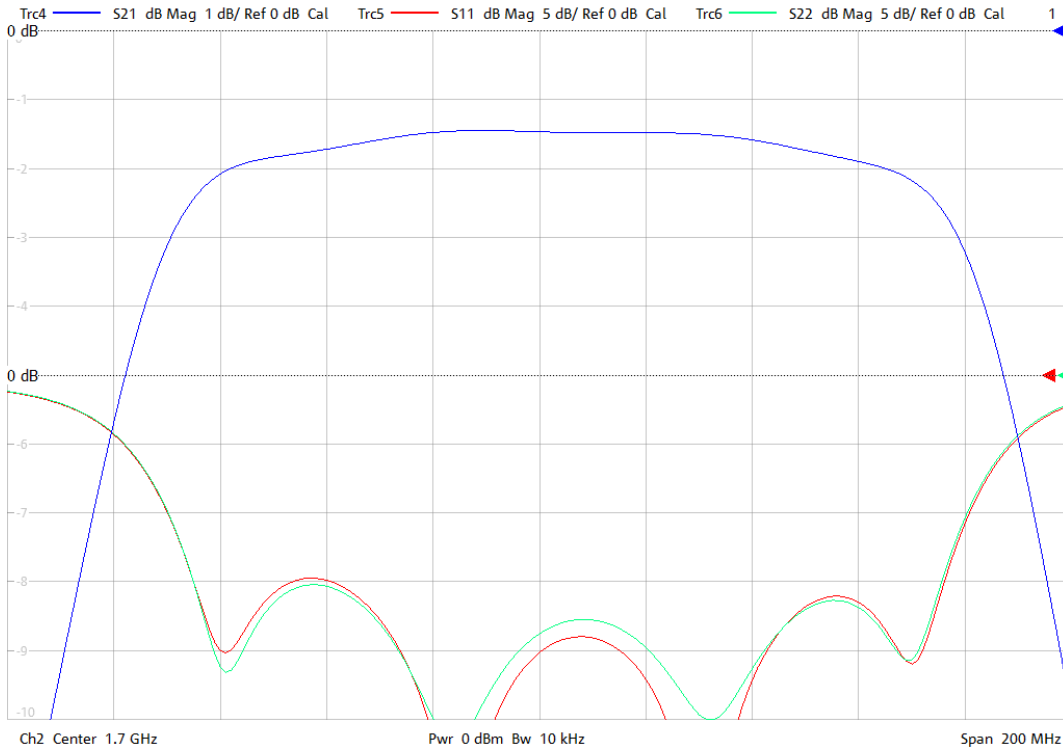
KR Electronics, Inc.  
91 Avenel Street  
Avenel, NJ 07001

Web [www.krfilters.com](http://www.krfilters.com)  
Email [sales@krfilters.com](mailto:sales@krfilters.com)  
Phone (732) 636-1900  
Fax (732) 636-1982

# KR Electronics 3340-SMA

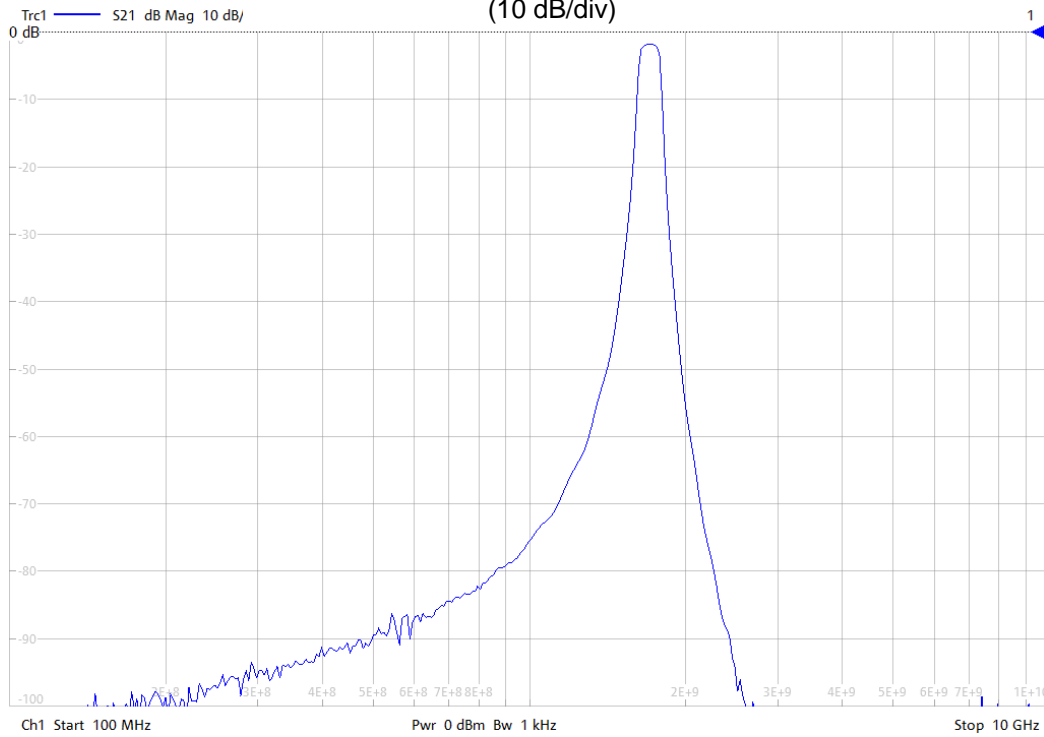
## Passband Amplitude & Return Loss

(1 dB/div & 5 dB/div)



## Overall Response

(10 dB/div)



KR Electronics, Inc.  
91 Avenel Street  
Avenel, NJ 07001

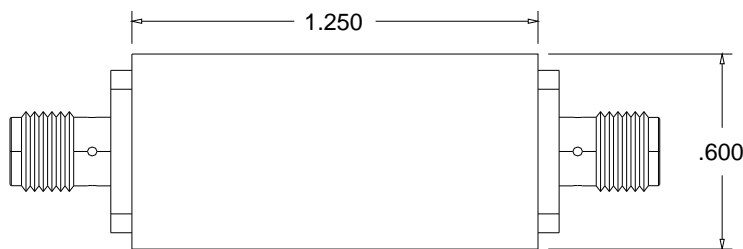
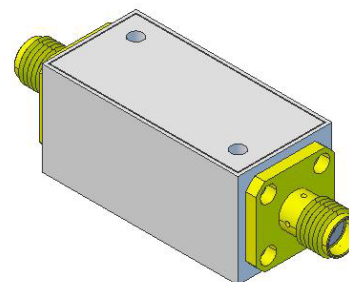
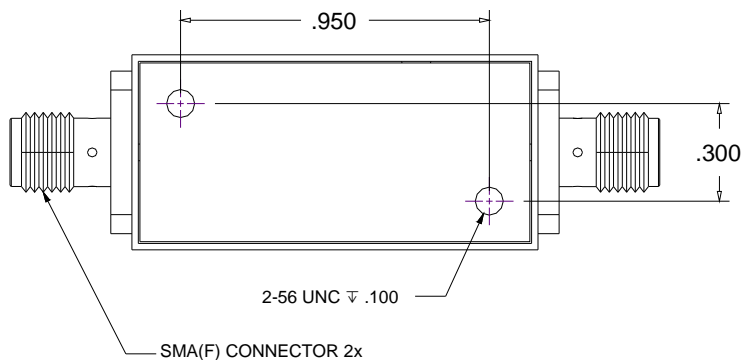
Web [www.krfilters.com](http://www.krfilters.com)  
Email [sales@krfilters.com](mailto:sales@krfilters.com)  
Phone (732) 636-1900  
Fax (732) 636-1982

# KR Electronics 3340-SMA

## Specifications

Parameter	Specification	
Filter type	Bandpass	
Center Frequency (Fc)	1700 MHz	
Insertion Loss at Fc	3.5 dBa max	1.4 dBa typical
1 dB Bandwidth	100 MHz min	138 MHz typical
3 dB Bandwidth	161 MHz typical	
20 dB Bandwidth	256 MHz typical	
40 dB Bandwidth	438 MHz typical	
60 dB Bandwidth	782 MHz typical	
Source and Load	50 $\Omega$	

## Physical Dimensions



**Notes:**

1. Dimensions in inches
2. Tolerance  $\pm 0.010$ "
3. Metal Case
4. SMA(F) Connectors

KR Electronics, Inc.  
91 Avenel Street  
Avenel, NJ 07001

Web [www.krfilters.com](http://www.krfilters.com)  
Email [sales@krfilters.com](mailto:sales@krfilters.com)  
Phone (732) 636-1900  
Fax (732) 636-1982