

KR Electronics, Inc.

General Description

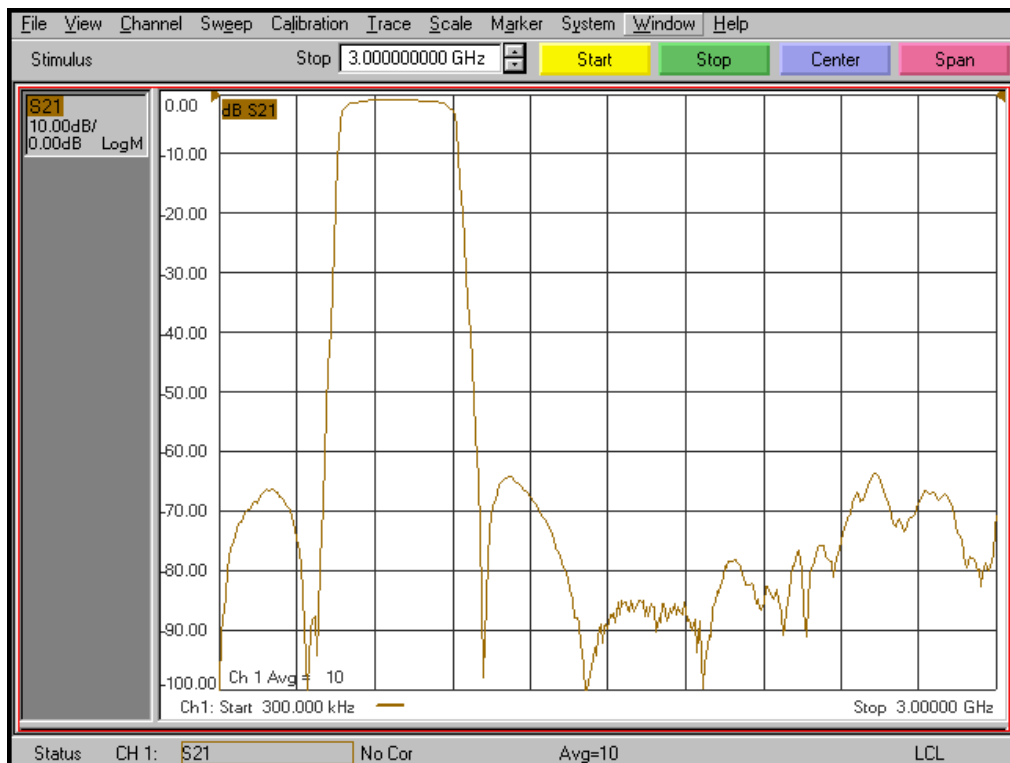
KR Electronics part number 3260-700 is a 700 MHz bandpass filter. Other frequencies are available. Please consult the factory.

Features

- 700 MHz Bandpass Filter
- 2 dB Bandwidth 400 MHz min
- 55 dB min at 400 & 1000 MHz
- Sharp Elliptic Type Filter
- 50 Ω Source and Load
- Surface Mount
- Other frequencies available

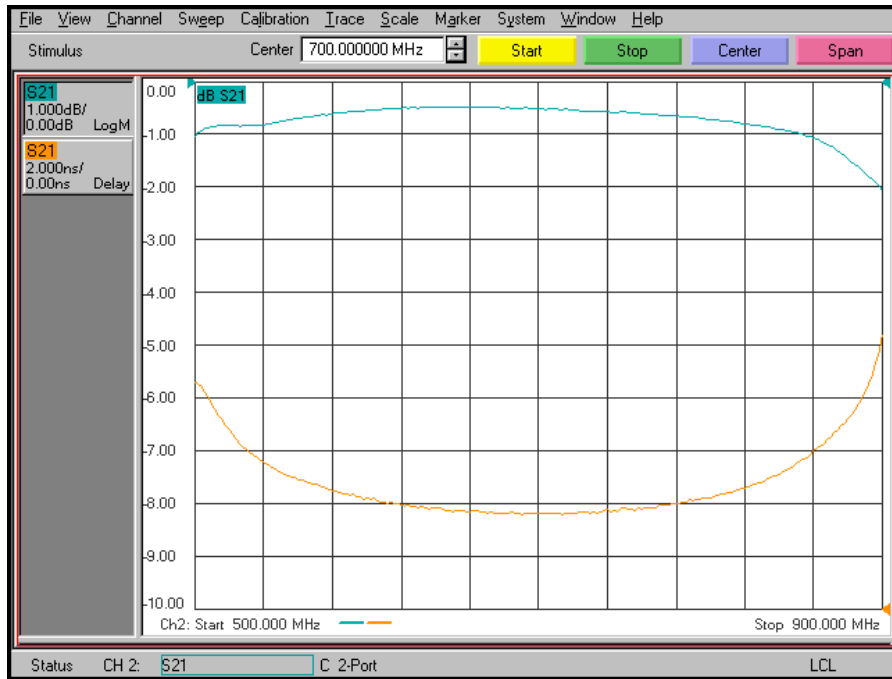
Typical Performance

Overall Response (10 dB/div)

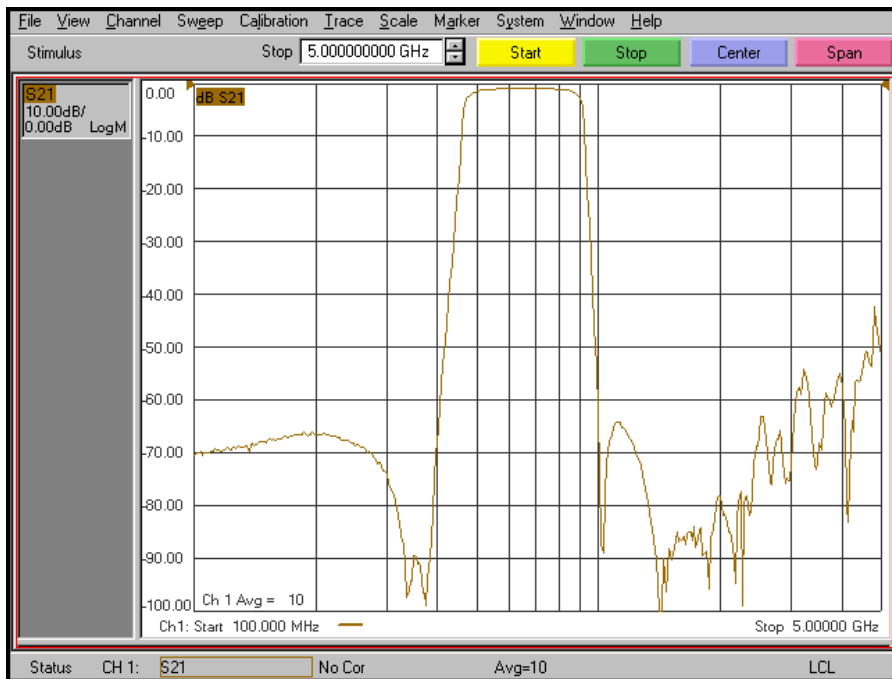


KR Electronics 3260-700

Passband Amplitude & Group Delay (1 dB/div & 2 nsec/div)



Overall Response (10 dB/div)



KR Electronics, Inc.
91 Avenel Street
Avenel, NJ 07001

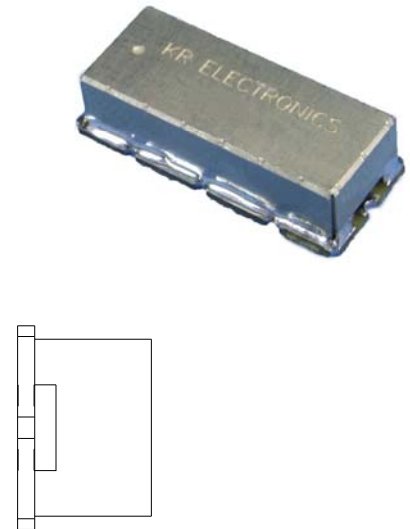
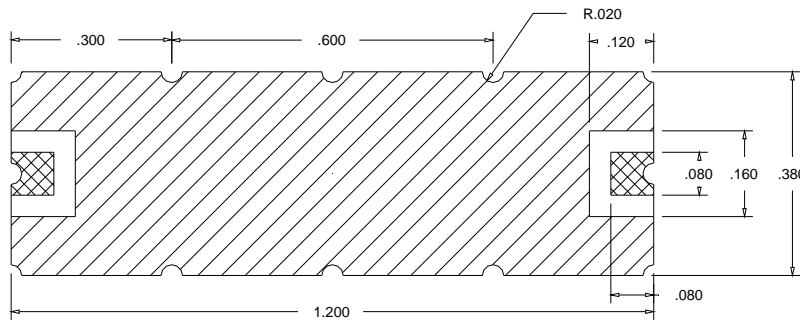
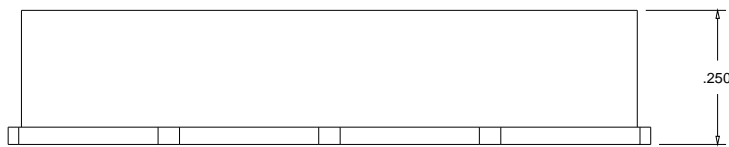
Web www.krfilters.com
Email sales@krfilters.com
Phone (732) 636-1900
Fax (732) 636-1982

KR Electronics 3260-700

Specifications

Parameter	Specification	
Filter type	Bandpass	
Center Frequency (Fc)	700 MHz	
Insertion Loss at Fc	2 dBa max	< 1 dBa typical
2 dBc Bandwidth	400 MHz min	
Rejection DC to 400 MHz	55 dBc min	
Rejection 1000 to 1800 MHz	55 dBc min	to 3000 MHz typical
Source and Load	50 Ω	

Physical Dimensions



Notes:

1. Surface mount package
2. Dimensions in inches
3. Max reflow temperature 230° C for 10 sec
4. If boards are cleaned after installation units must be completely dried

KR Electronics, Inc.
91 Avenel Street
Avenel, NJ 07001

Web www.krfilters.com
Email sales@krfilters.com
Phone (732) 636-1900
Fax (732) 636-1982