

KR Electronics, Inc.

General Description

KR Electronics part number 3259-200-SMA is a 200 MHz band-pass filter module. Other frequencies are available. Please consult the factory.

Features

- 200 MHz Bandpass Filter
- 2 dB Bandwidth 100 MHz min
- 55 dB min at 100 & 300 MHz
- Sharp Elliptic Type Filter
- 50 Ω Source and Load
- SMA Connectors
- Surface Mount Available

Typical Performance

Overall Response (10 dB/div)

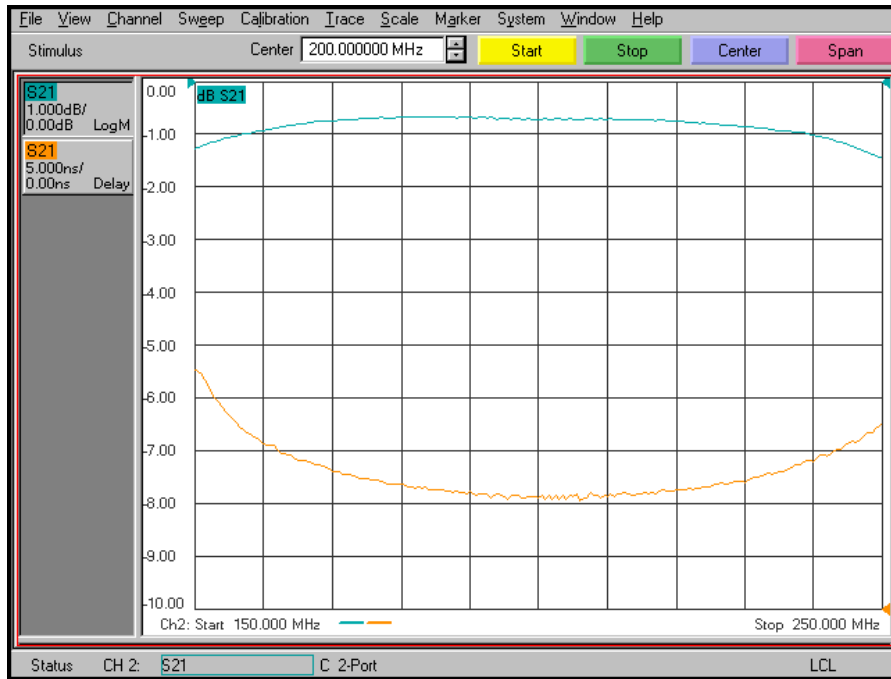


KR Electronics, Inc.
91 Avenel Street
Avenel, NJ 07001

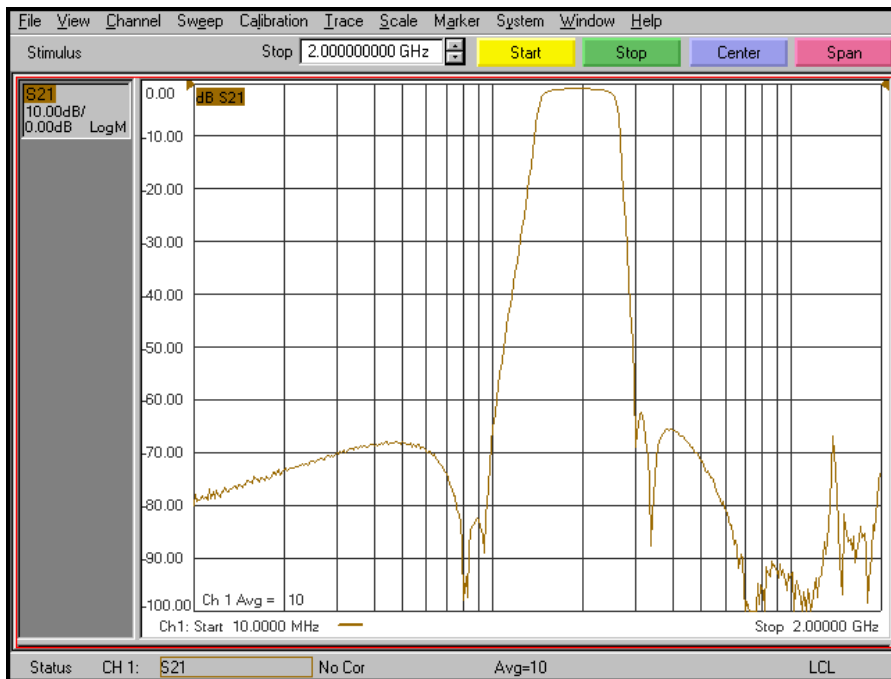
Web www.krfilters.com
Email sales@krfilters.com
Phone (732) 636-1900
Fax (732) 636-1982

KR Electronics 3259-200-SMA

Passband Amplitude & Group Delay (1 dB/div & 5 nsec/div)



Overall Response (10 dB/div)



KR Electronics, Inc.
91 Avenel Street
Avenel, NJ 07001

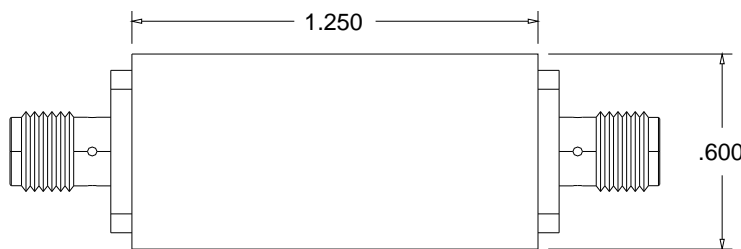
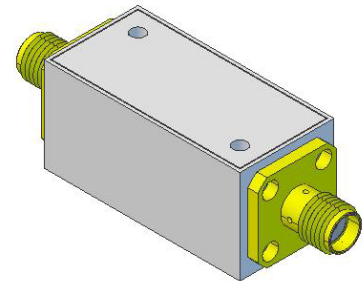
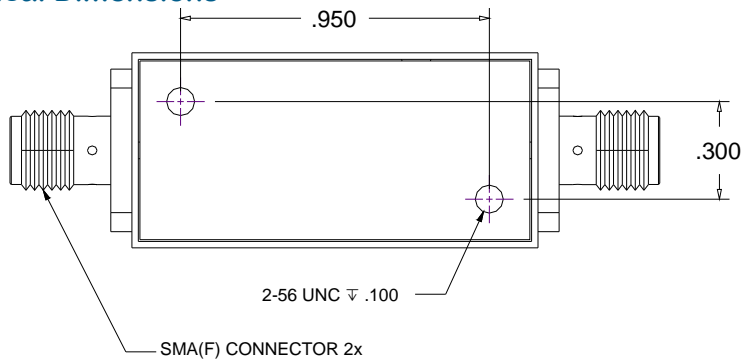
Web www.krfilters.com
Email sales@krfilters.com
Phone (732) 636-1900
Fax (732) 636-1982

KR Electronics 3259-200-SMA

Specifications

Parameter	Specification
Filter type	Bandpass
Center Frequency (Fc)	200 MHz
Insertion Loss at Fc	2 dBa max < 1 dBa typical
2 dBc Bandwidth	100 MHz min
Rejection DC to 100 MHz	55 dBc min
Rejection 300 to 1800 MHz	55 dBc min
Source and Load	50 Ω

Physical Dimensions



Notes:

1. Dimensions in inches
2. Tolerance $\pm 0.010''$
3. Metal Case
4. SMA (F) Connectors
5. Also available in surface mount package

KR Electronics, Inc.
91 Avenel Street
Avenel, NJ 07001

Web www.krfilters.com
Email sales@krfilters.com
Phone (732) 636-1900
Fax (732) 636-1982