

# KR Electronics, Inc.

## General Description

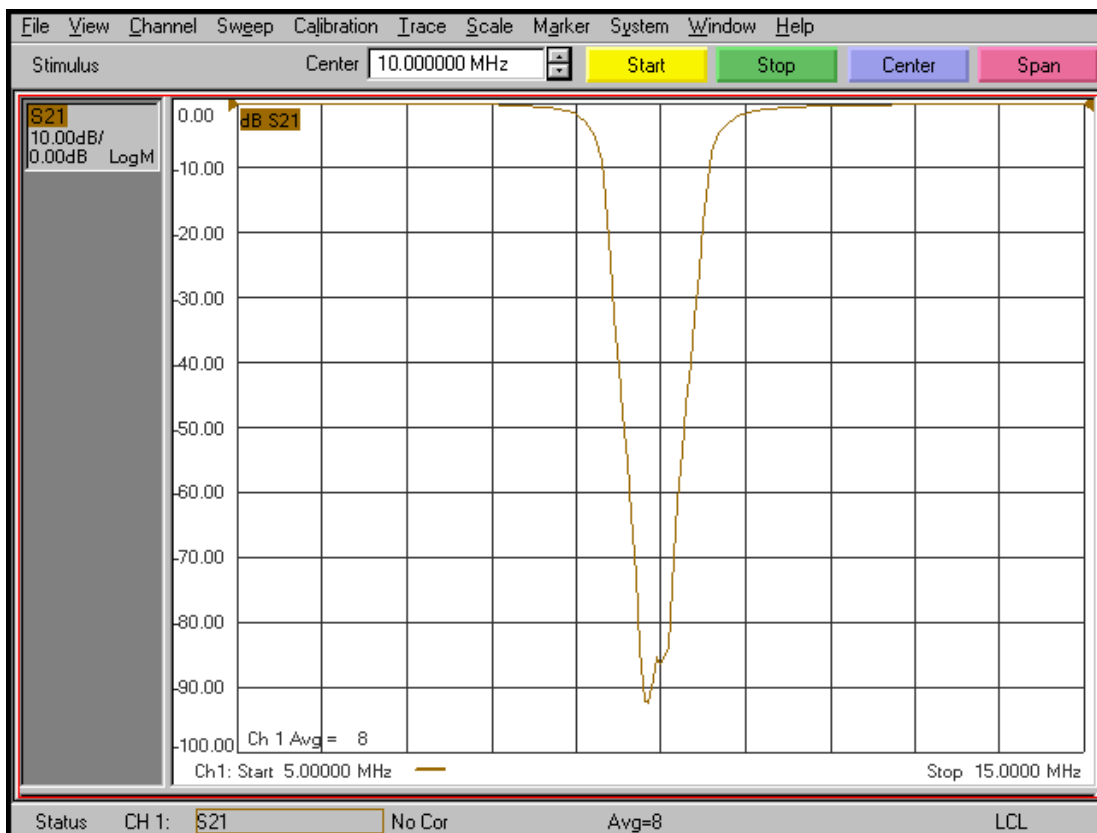
KR Electronics part number 3203 is a 10 MHz Bidirectional Absorptive Notch filter. The filter has a 1.25 dB bandwidth of 3 MHz max. Other notch frequencies and are bandwidths available. Please consult the factory.

### Features

- 10 MHz Bidirectional Absorptive Notch
- Low VSWR even in Notch
- 1.66 MHz typical 3 dB Bandwidth
- High Notch Rejection
- 50  $\Omega$  Source and Load
- SMA Connectors

## Typical Performance

**Overall Response**  
(10 dB/div)

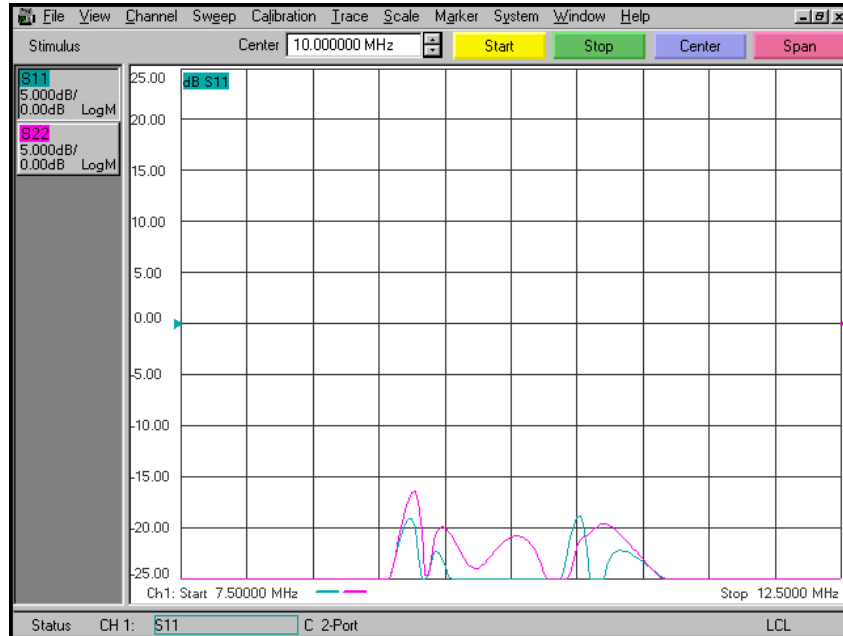


KR Electronics, Inc.  
91 Avenel Street  
Avenel, NJ 07001

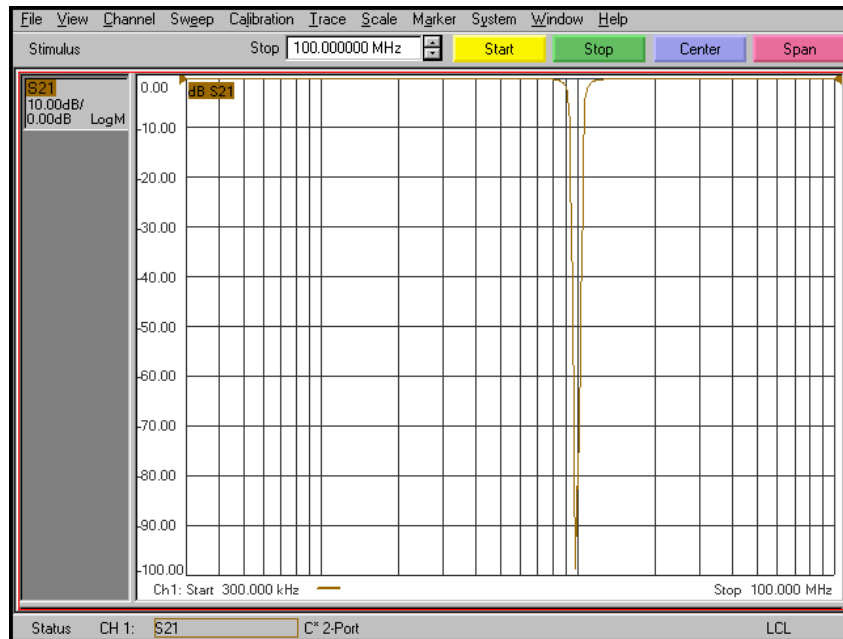
Web [www.krfilters.com](http://www.krfilters.com)  
Email [sales@krfilters.com](mailto:sales@krfilters.com)  
Phone (732) 636-2500  
Fax (732) 636-2582

## Typical Performance

### Return Loss (5 dB/div)



### Overall Response (10 dB/div)



KR Electronics, Inc.  
91 Avenel Street  
Avenel, NJ 07001

Web  
Email  
Phone  
Fax

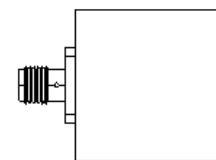
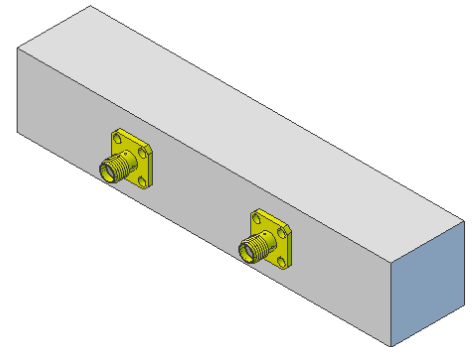
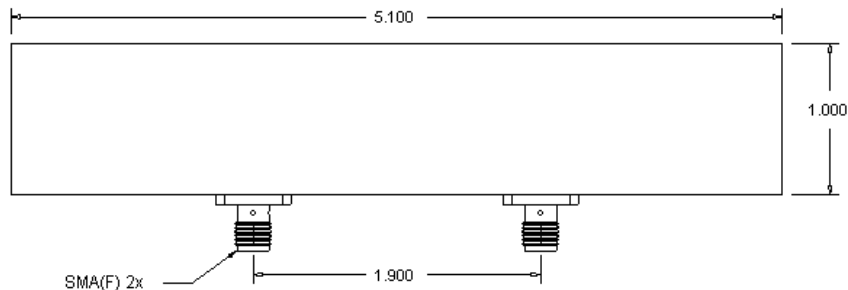
www.krfilters.com  
sales@krfilters.com  
(732) 636-2500  
(732) 636-2582

# KR Electronics 3203

## Specifications

Parameter	Specification	Notes
Filter type	Bidirectional Absorptive Notch	
Notch Frequency	10 MHz	
Insertion Loss at 8.5 MHz & 11.5 MHz	1.25 dB max	0.6 dB typical
Insertion Loss at 9.85 to 10.15 MHz	45 dB min	> 70 dB typical
Input & Output Return Loss 9.85 to 10.15 MHz	12 dB min	20 dB typical
1 dB Bandwidth	2.4 MHz typical	
3 dB Bandwidth	1.66 MHz typical	Passband to 100 MHz min
40 dB Bandwidth	855 KHz typical	
50 dB Bandwidth	709 KHz typical	
60 dB Bandwidth	577 KHz typical	
Source and Load	50 $\Omega$	

## Physical Dimensions



**Notes:**

1. Dimensions in inches
2. Rectangular case

KR Electronics, Inc.  
91 Avenel Street  
Avenel, NJ 07001

Web [www.krfilters.com](http://www.krfilters.com)  
Email [sales@krfilters.com](mailto:sales@krfilters.com)  
Phone (732) 636-2500  
Fax (732) 636-2582