

General Description

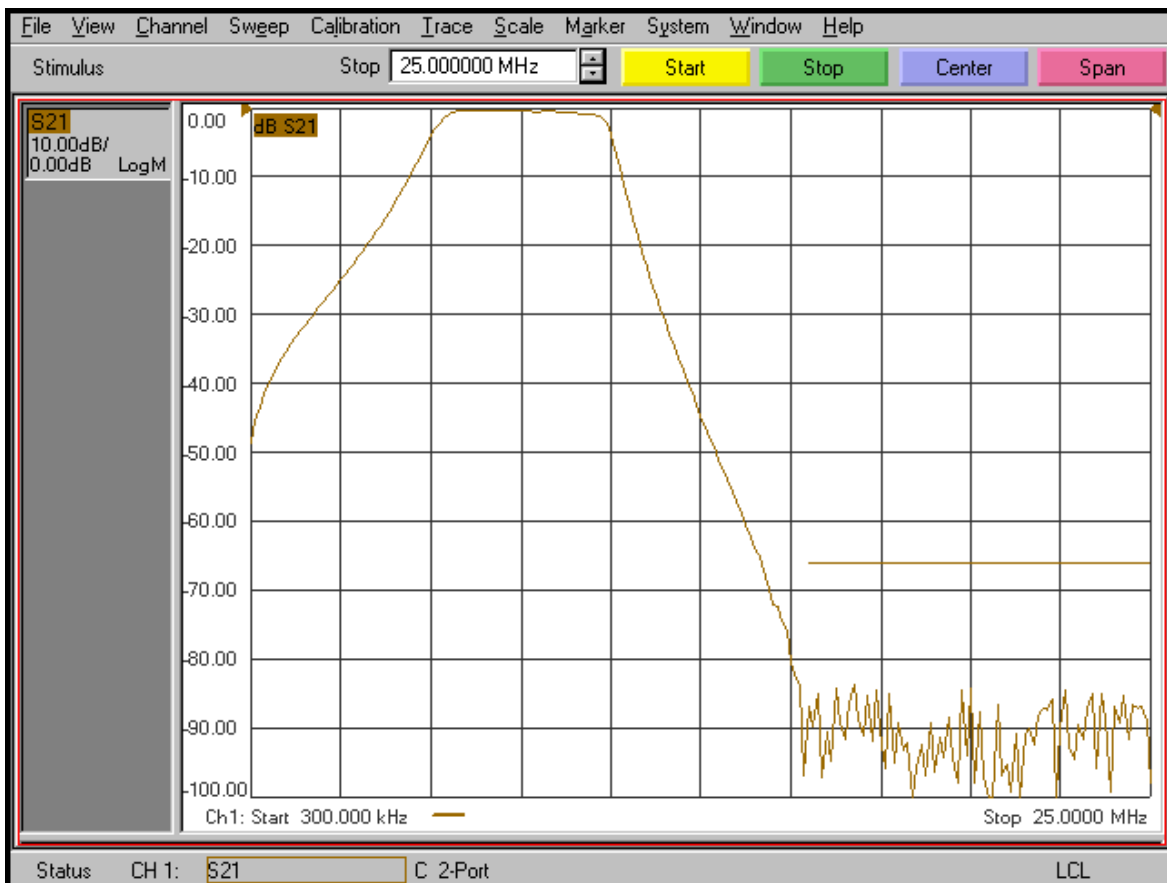
KR Electronics part number 2710-7.8M-SMA is a 7.8 MHz bandpass filter. The filter has a minimum 3 dB bandwidth of 4 MHz and 65 dB at 15.6 MHz. Other center frequencies and bandwidths are available. Please consult the factory.

Features

- 7.8 MHz Bandpass Filter
- 4 MHz min 3 dB Bandwidth
- 50 Ω Source and Load
- SMA Connectors
- Also available as surface mount

Typical Performance

Overall Response (10 dB/div)

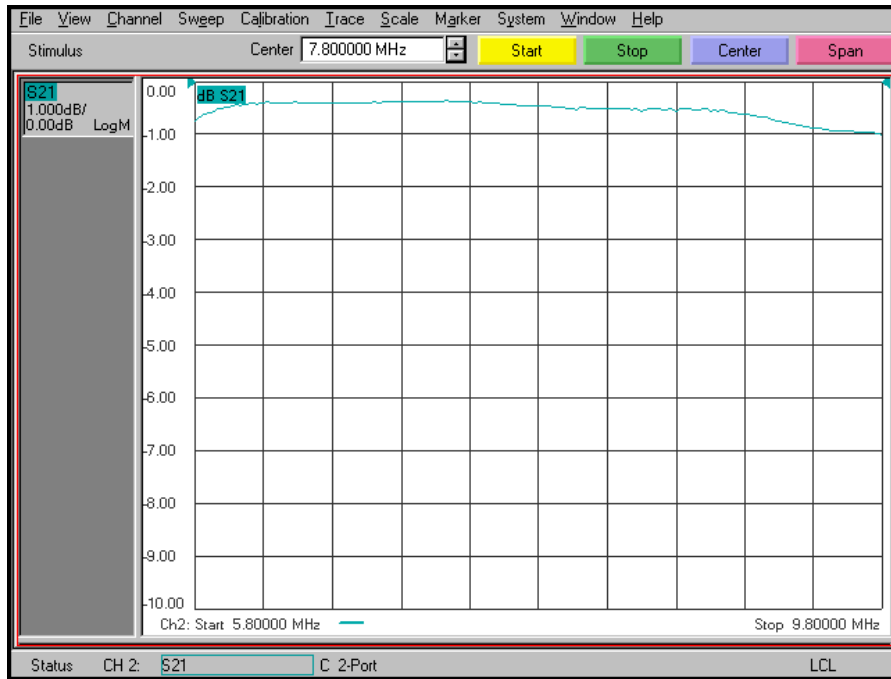


KR Electronics, Inc.
91 Avenel Street
Avenel, NJ 07001

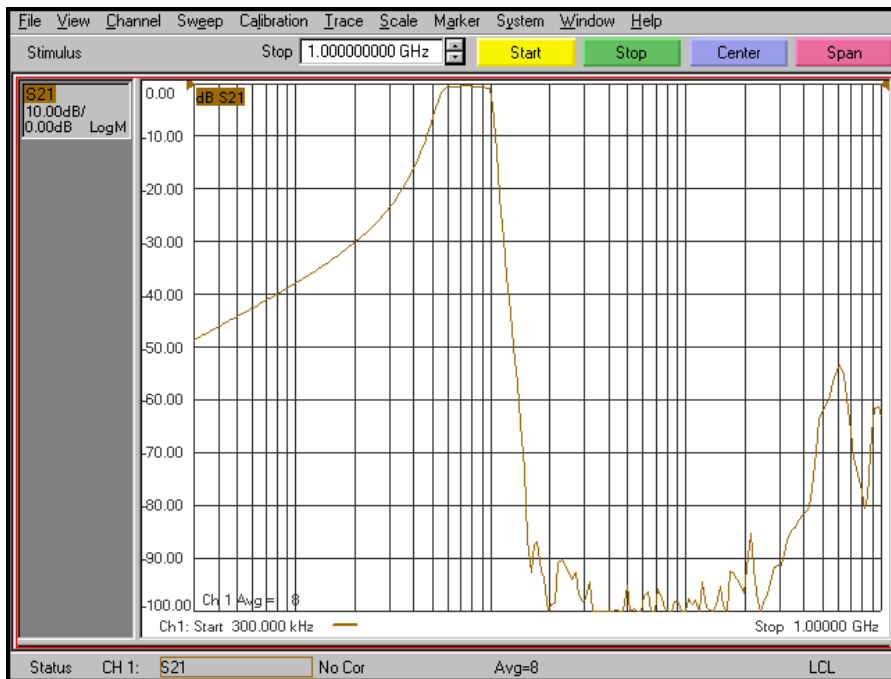
Web www.krfilters.com
Email sales@krfilters.com
Phone (732) 636-1900
Fax (732) 636-1982

KR Electronics 2710-7.8M-SMA

Passband Amplitude (1 dB/div)



Overall Response (10 dB/div)



KR Electronics, Inc.
91 Avenel Street
Avenel, NJ 07001

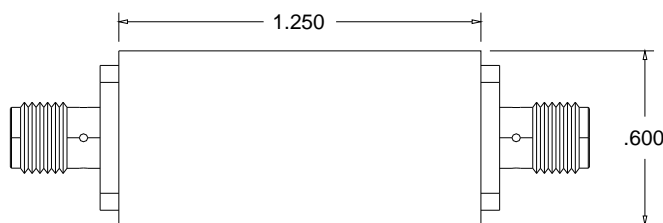
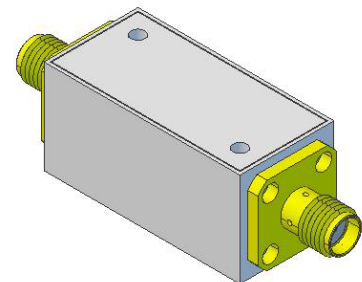
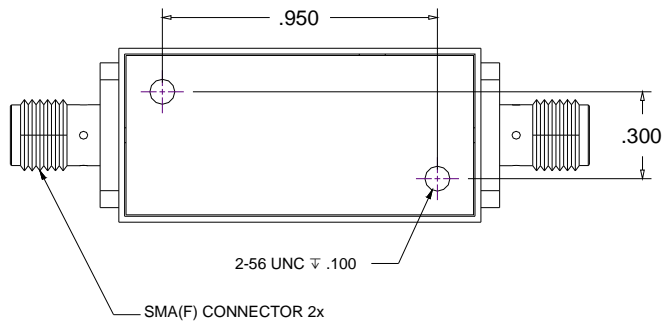
Web www.krfilters.com
Email sales@krfilters.com
Phone (732) 636-1900
Fax (732) 636-1982

KR Electronics 2710-7.8M-SMA

Specifications

Parameter	Specification
Filter type	Bandpass
Center Frequency	7.8 MHz
Insertion Loss	2 dB max < 1 dB typical
3 dB Bandwidth	4 MHz min
Rejection at 15.6 MHz & up	65 dB min
Source and Load	50 Ω

Physical Dimensions



Notes:

1. Dimensions in inches
2. Metal Case
3. SMA(F) Connectors
4. Also available in surface mount package

KR Electronics, Inc.
91 Avenel Street
Avenel, NJ 07001

Web www.krfilters.com
Email sales@krfilters.com
Phone (732) 636-1900
Fax (732) 636-1982