

KR 2572 Bandpass Filter

General Description

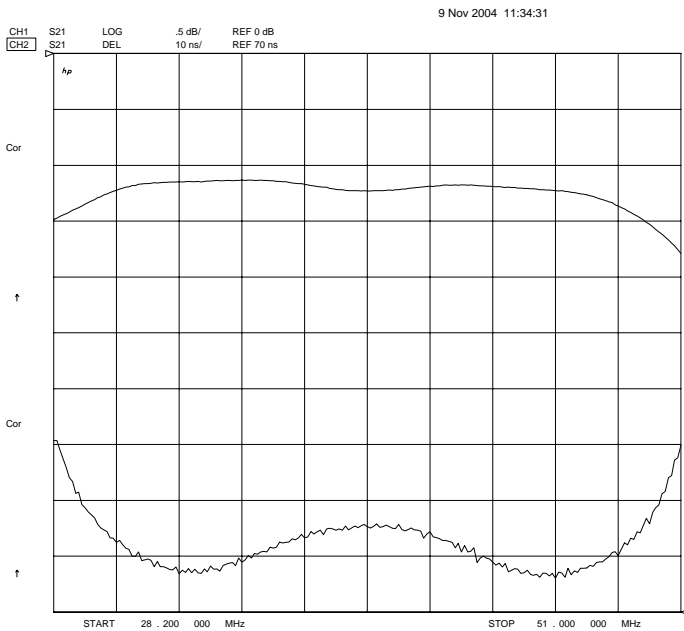
KR 2572 is a 39.6 MHz group delay equalized surface mount bandpass filter. Other center frequencies and bandwidths available. Please consult the factory.

Features

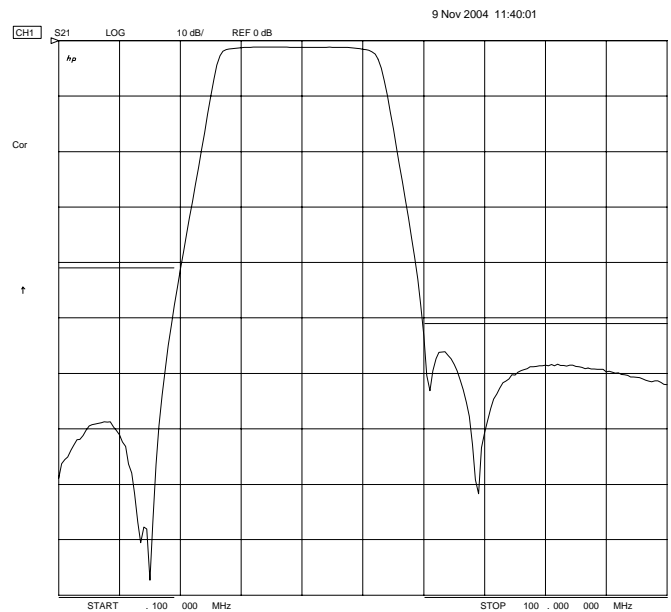
- Surface Mount Package
- Group Delay Equalized
- Sharp Transition to Stopband
- >40 dB Stopband
- 50 Ω Source and Load

Typical Performance

Passband Amplitude & Group Delay
(0.5 dB/div & 10 nsec/div)



Overall Response
(10 dB/div)



KR Electronics, Inc.
91 Avenel Street
Avenel, NJ 07001

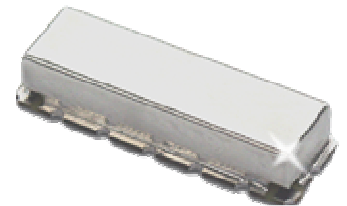
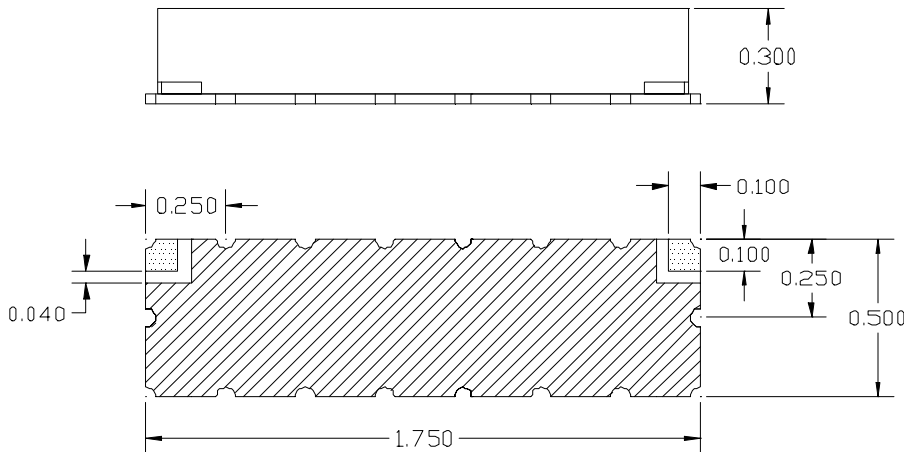
Web www.krfilters.com
Email sales@krfilters.com
Phone (732) 636-1900
Fax (732) 636-1982

KR 2572 Bandpass

Specifications

Parameter	Specification
Filter type	Bandpass
Center Frequency	39.6 MHz
Insertion Loss	< 3.5 dB
Attenuation 28.2 MHz to 51 MHz	< 1 dB
Attenuation 19 MHz	> 40 dB
Attenuation 60.2 MHz	> 50 dB
Group Delay Ripple 28.2 MHz to 51 MHz	< 30 nsec
Source and Load	50 Ω

Physical Dimensions



Notes:

1. Surface mount package — Metal cover, open frame
2. Dimensions in inches
3. Use SN60 or SN63 solder during installation
4. If boards are cleaned after installation, units must be completely dried to remove any entrapped moisture that will effect electrical performance