

# KR 2395-85 Bandpass Filter

## General Description

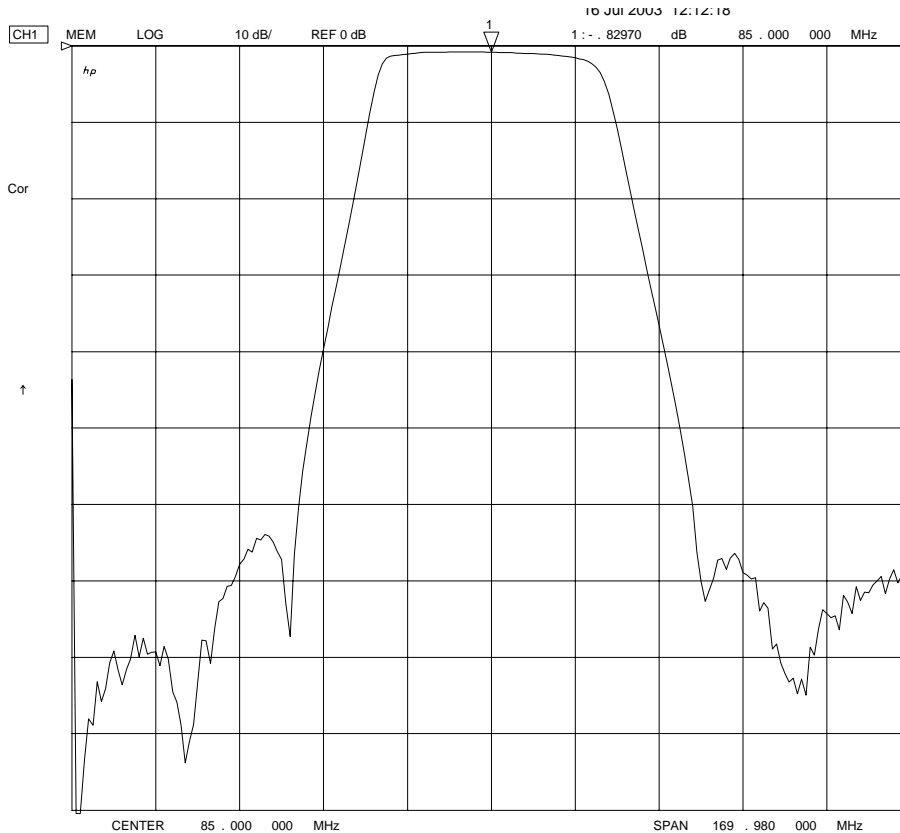
KR 2395-85 is a surface mount bandpass filter. Other center frequencies and bandwidths available. Please consult the factory.

## Features

- Surface Mount Package
- Sharp Transition to Stopband
- >50 dB Stopband
- 50  $\Omega$  Source and Load

## Typical Performance

**Overall Response**  
(10 dB/div)



KR Electronics, Inc.  
91 Avenel Street  
Avenel, NJ 07001

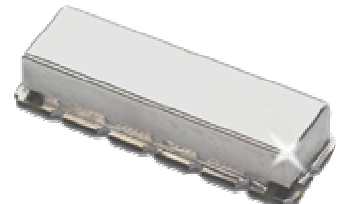
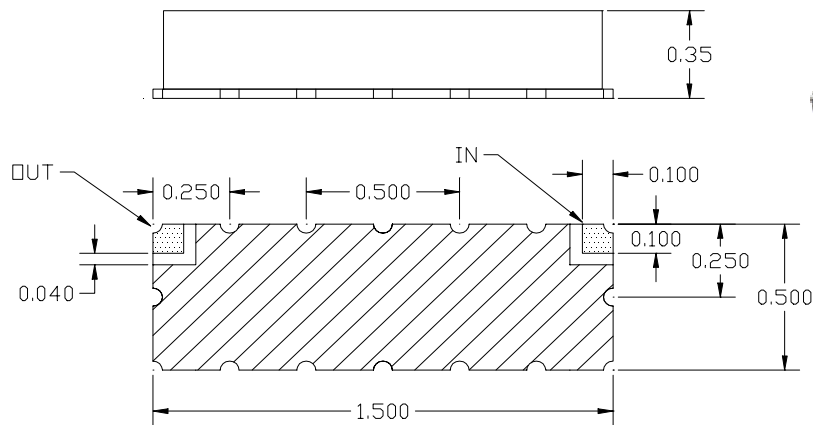
Web [www.krfilters.com](http://www.krfilters.com)  
Email [sales@krfilters.com](mailto:sales@krfilters.com)  
Phone (732) 636-1900  
Fax (732) 636-1982

# KR 2395-85 Bandpass

## Specifications

Parameter	Specification
Filter type	Bandpass
Center Frequency	85 MHz
Insertion Loss	< 2 dB ( 0.9 dB Typical)
35 MHz	> 50 dB
67.5 MHz	< 3 dB
85 MHz	Reference
102.5 MHz	< 3 dB
135 MHz	> 50 dB
Source and Load	50 Ω

## Physical Dimensions



### Notes:

1. Surface mount package — Metal cover, open frame
2. Dimensions in inches
3. Use SN60 or SN63 solder during installation
4. If boards are cleaned after installation, units must be completely dried to remove any entrapped moisture that will effect electrical performance