

## General Description

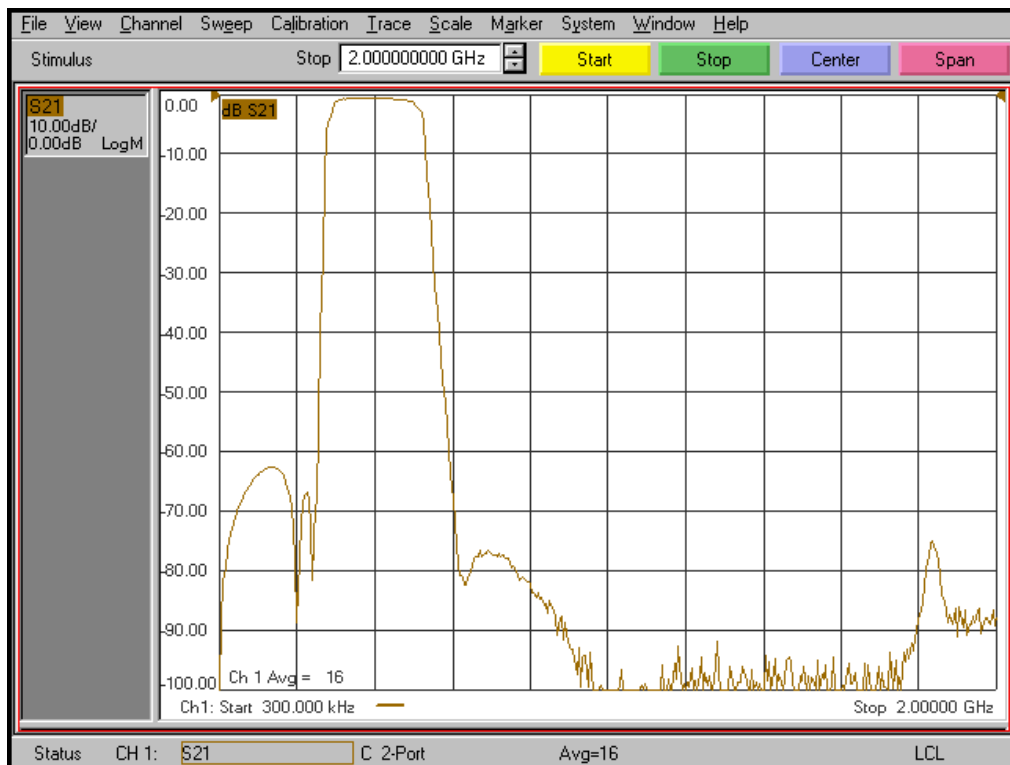
KR Electronics part number 3260-400-SMA is a 400 MHz band-pass filter. Other frequencies are available. Please consult the factory.

## Features

- 400 MHz Bandpass Filter
- 2 dB Bandwidth 200 MHz min
- 55 dB min at 250 & 650 MHz
- Sharp Elliptic Type Filter
- 50  $\Omega$  Source and Load
- SMA Connectors
- Other frequencies available

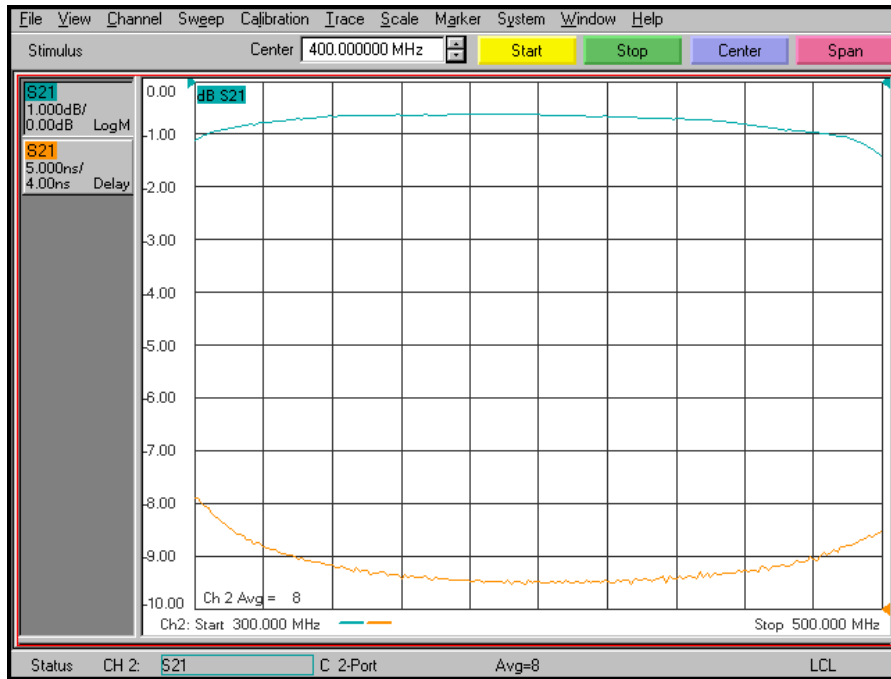
## Typical Performance

### Overall Response (10 dB/div)

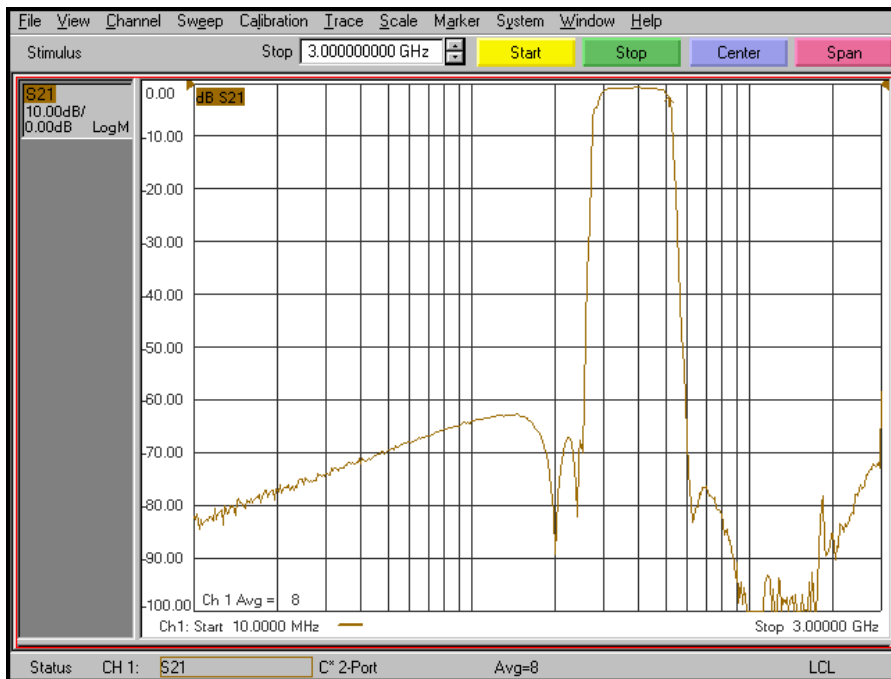


# KR Electronics 3260-400-SMA

## Passband Amplitude & Group Delay (1 dB/div & 5 nsec/div)



## Overall Response (10 dB/div)



KR Electronics, Inc.  
91 Avenel Street  
Avenel, NJ 07001

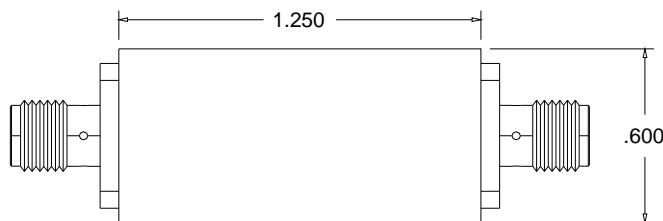
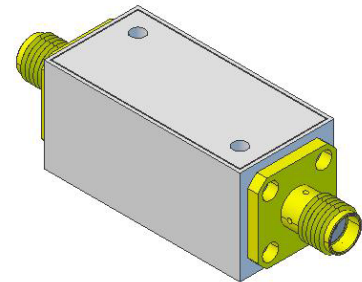
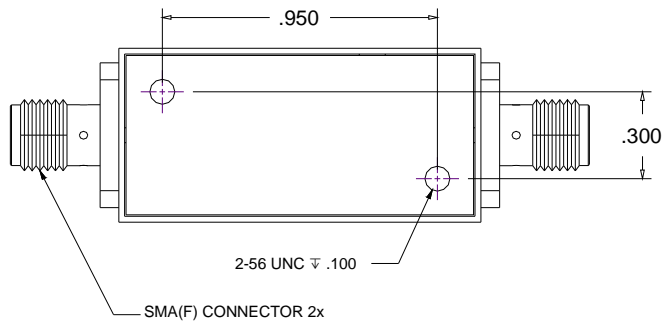
Web [www.krfilters.com](http://www.krfilters.com)  
Email [sales@krfilters.com](mailto:sales@krfilters.com)  
Phone (732) 636-1900  
Fax (732) 636-1982

# KR Electronics 3260-400-SMA

## Specifications

| Parameter                 | Specification                     |
|---------------------------|-----------------------------------|
| Filter type               | Bandpass                          |
| Center Frequency (Fc)     | 400 MHz                           |
| Insertion Loss at Fc      | 2 dBa max<br>< 1 dBa typical      |
| 2 dBc Bandwidth           | 200 MHz min                       |
| Rejection DC to 250 MHz   | 55 dBc min                        |
| Rejection 650 to 1800 MHz | 55 dBc min<br>to 3000 MHz typical |
| Source and Load           | 50 Ω                              |

## Physical Dimensions



**Notes:**

1. Dimensions in inches
2. Metal Case
3. SMA(F) Connectors
4. Also available in surface mount package

KR Electronics, Inc.  
91 Avenel Street  
Avenel, NJ 07001

Web [www.krfilters.com](http://www.krfilters.com)  
Email [sales@krfilters.com](mailto:sales@krfilters.com)  
Phone (732) 636-1900  
Fax (732) 636-1982