

# KR 2591 Bandpass Filter

## General Description

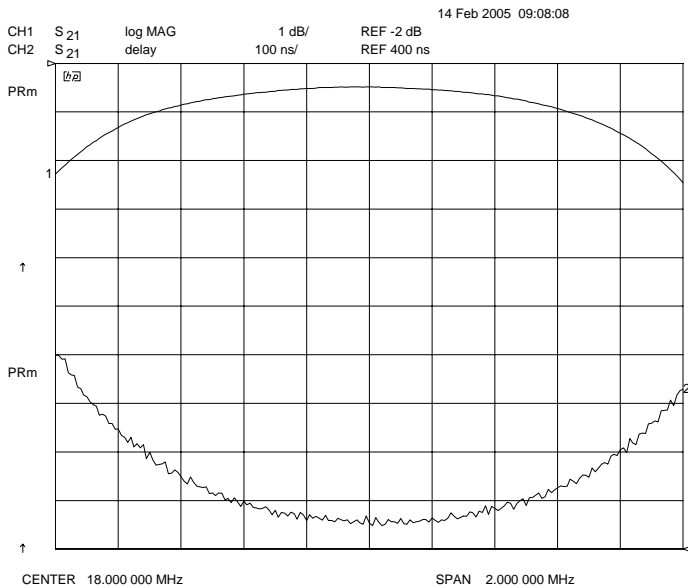
KR 2591 is a 18 MHz surface mount bandpass filter. Other center frequencies and bandwidths available. Please consult the factory.

### Features

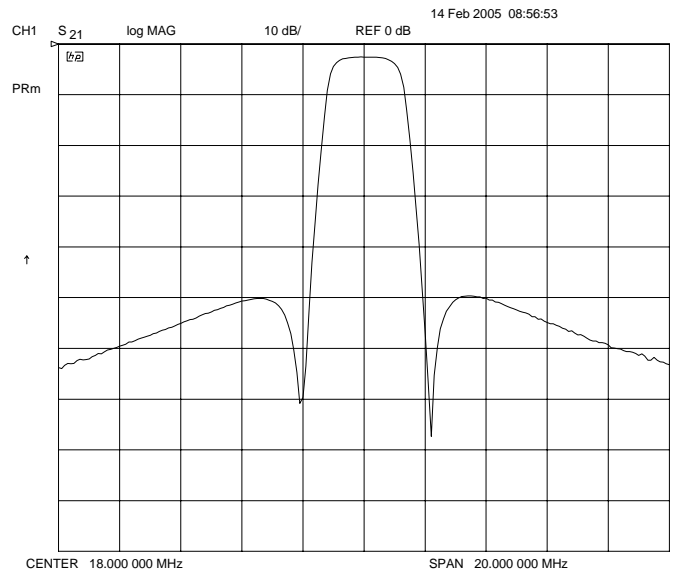
- Surface Mount Package
- Sharp Transition to Stopband
- >40 dB Stopband
- 50  $\Omega$  Source and Load

## Typical Performance

**Passband Amplitude & Group Delay**  
(1 dB/div & 50 nsec/div)



**Overall Response**  
(10 dB/div)



KR Electronics, Inc.  
91 Avenel Street  
Avenel, NJ 07001

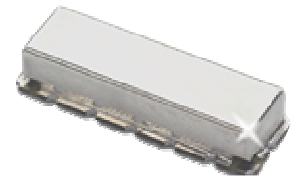
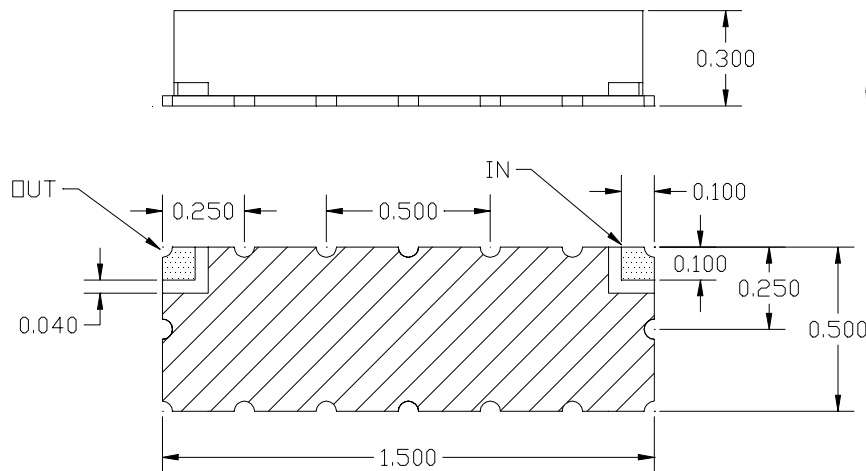
Web www.krfilters.com  
Email sales@krfilters.com  
Phone (732) 636-1900  
Fax (732) 636-1982

# KR 2591 Bandpass

## Specifications

Parameter	Specification
Filter type	Bandpass
Center Frequency	18 MHz
Insertion Loss	< 6 dB (< 3 dB typical)
Minimum 3 dB Bandwidth	2 MHz
Attenuation 16 MHz	> 40 dB
Attenuation 20 MHz	> 40 dB
Source and Load	50 Ω

## Physical Dimensions



### Notes:

1. Surface mount package — Metal cover, open frame
2. Dimensions in inches
3. Use SN60 or SN63 solder during installation
4. If boards are cleaned after installation, units must be completely dried to remove any entrapped moisture that will effect electrical performance