

KR 2395-25 Bandpass Filter

General Description

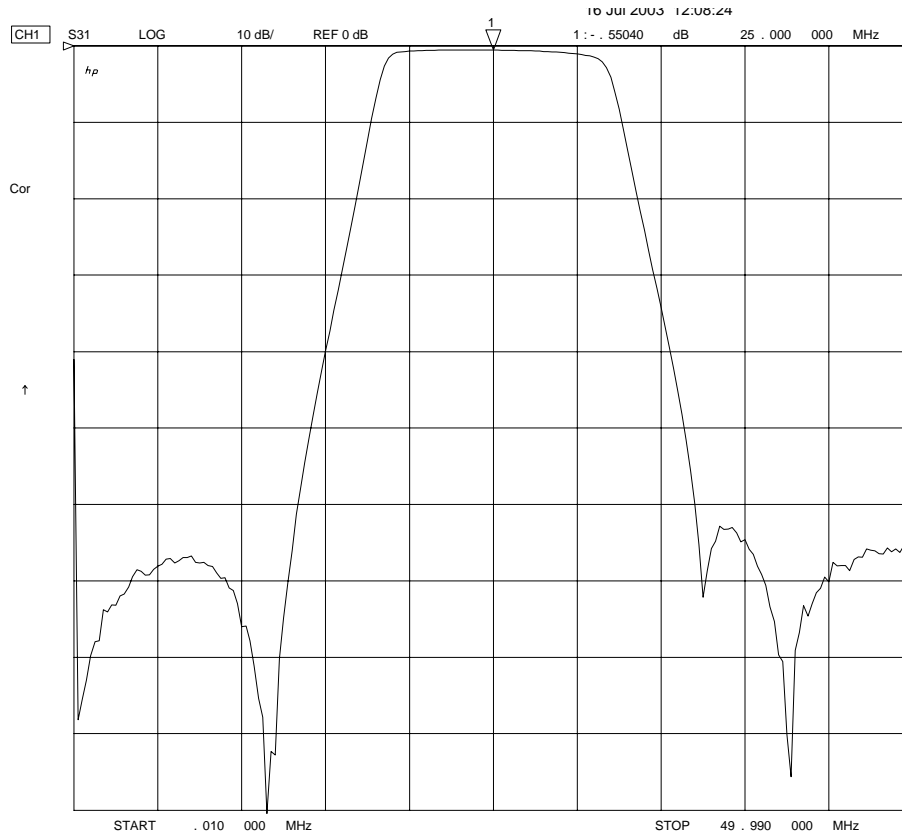
KR 2395-25 is a surface mount bandpass filter. Other center frequencies and bandwidths available. Please consult the factory.

Features

- Surface Mount Package
- Sharp Transition to Stopband
- >50 dB Stopband
- 50 Ω Source and Load

Typical Performance

Overall Response
(10 dB/div)



KR Electronics, Inc.
91 Avenel Street
Avenel, NJ 07001

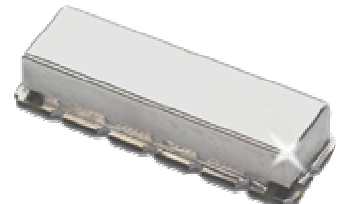
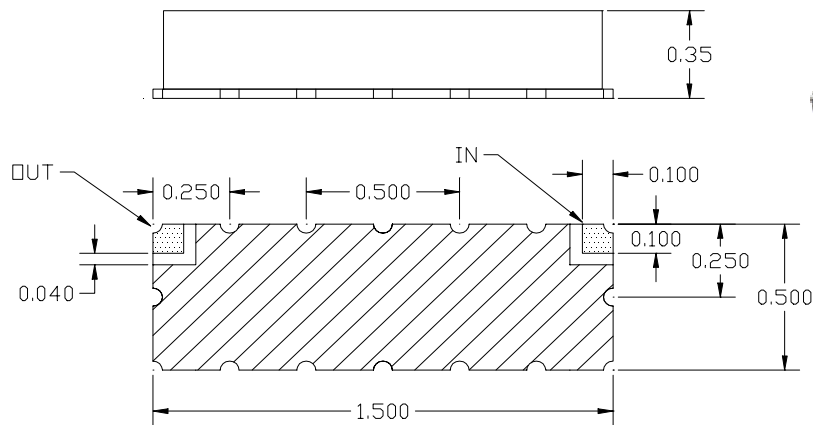
Web www.krfilters.com
Email sales@krfilters.com
Phone (732) 636-1900
Fax (732) 636-1982

KR 2395-25 Bandpass

Specifications

Parameter	Specification
Filter type	Bandpass
Center Frequency	25 MHz
Insertion Loss	< 2 dB (0.6 dB Typical)
5 MHz	> 50 dB
19 MHz	< 3 dB
25 MHz	Reference
31 MHz	< 3 dB
45 MHz	> 50 dB
Source and Load	50 Ω

Physical Dimensions



Notes:

1. Surface mount package — Metal cover, open frame
2. Dimensions in inches
3. Use SN60 or SN63 solder during installation
4. If boards are cleaned after installation, units must be completely dried to remove any entrapped moisture that will effect electrical performance